

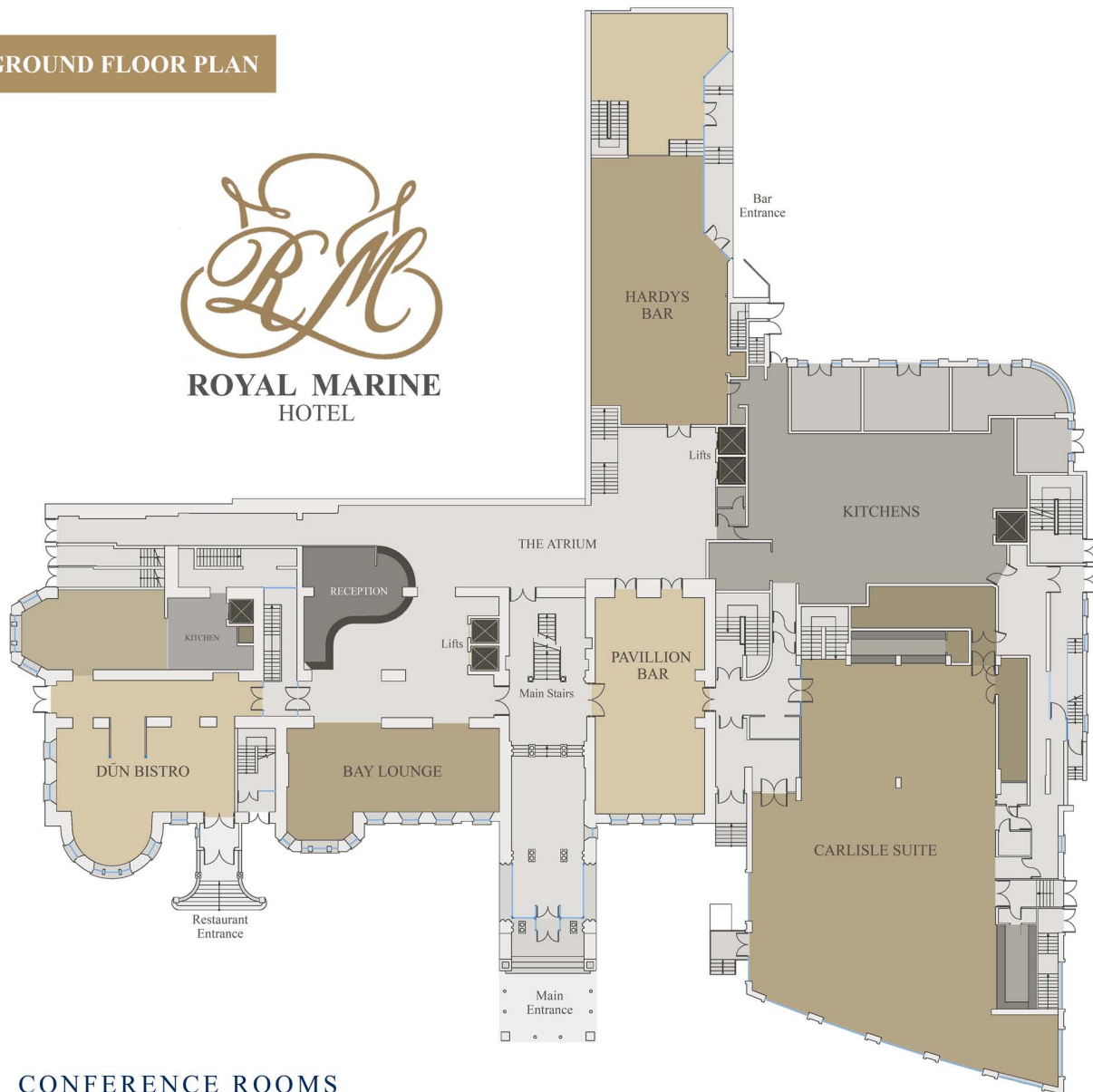
# CONFERENCE FACILITIES AND DEDICATED MEETING ROOMS



## GROUND FLOOR PLAN



**ROYAL MARINE  
HOTEL**



## CONFERENCE ROOMS

Room Details	Floor Area (Sq.m)	Theatre	Classroom	Boardroom	Cabaret	Banquet	Banquet (Trestle)	Cocktail	U-Shape
Carlisle Suite	595	500 +100Mezz	240	-	189	400 +80Mezz	500 +100Mezz	750	100
Carlisle East	415	340	150	-	133	240	360	350	70
Carlisle West	152	110	80	-	56	110	140	250	40
Martello Suite	190	150	80	-	60	100 - 150	180	220	50
Martello 1	91	80	40	28	30	70	90	110	36
Martello 2	100	80	40	28	30	70	90	110	36
Dargan Suite	51	48	32	25	-	-	-	40	20
Portview	26.3	16	-	12	-	-	-	-	12
Rathdown	26.3	16	-	12	-	-	-	-	12
Hayes	36.4	-	-	14	-	-	-	-	-
Mariner	56	50	30	28	-	-	-	-	26
Dunleary	38.8	30	28	20	-	-	-	-	20
Kingstown	90	100	50	36	-	-	-	100	36
Kingstown 1	58.5	60	30	28	-	-	-	70	26
Kingstown 2	39.9	30	28	20	-	-	-	30	20
McCurdy	37	-	-	14	-	-	-	-	-
Haigh	18	16	-	12	-	-	-	-	-
Pavillion Bar	128	-	-	-	-	55	-	100	-
Laurels Bar	155	-	-	-	-	100	-	180	-

\*Banqueting numbers subject to dance floor, staging and backdrop requirements

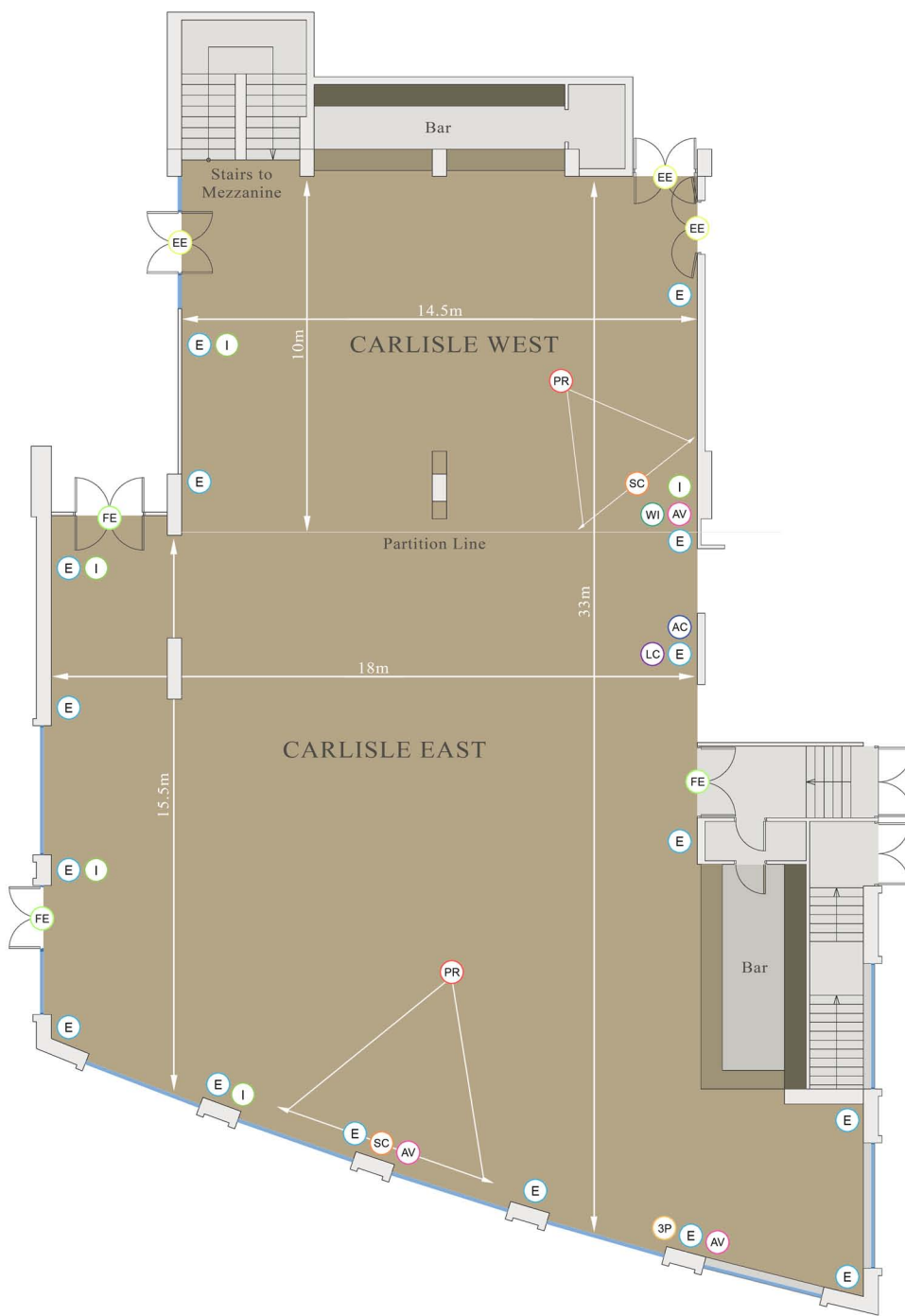


Royal Marine Hotel, Dún Laoghaire, Dublin, Ireland

T 00353 (0)1 230 0030 | F 00353 (0)1 230 0029 | E EVENTS@ROYALMARINE.IE | W WWW.ROYALMARINE.IE

# CONFERENCE FACILITIES AND DEDICATED MEETING ROOMS

## CARLISLE SUITE



### KEY

- Telephone (T)
- Plasma TV (TV)
- Internet (I)
- Wireless Network (WI)
- Electricity Socket (E)
- Air-Conditioning Control (AC)
- Lighting Controls (LC)
- AV Connection Panel (AV)
- LCD Projector (PR)
- Projection Screen (SC)
- 3 Phase Power (3P)
- Emergency Exit (EE)
- Fire Exit (FE)

Room Details	Size (m)	Floor Area (Sq.m)	Ceiling Height (m)	Theatre	Classroom	Cabaret	Banquet	Cocktail	U-Shape
Carlisle Suite	33 x 18	595	4.1	500 +100Mezz	240	189	400 +80Mezz	750	100
Carlisle East	23 x 18	415	4.1	340	150	133	240	350	70
Carlisle West	10 x 14.5	152	4.1	110	80	56	110	250	40

Room Features	Air Conditioning	Dimmers	Daylight / Blackout	Sound	Screen	Plasma / LCD	Hi Speed Internet	Wireless Internet
Carlisle Suite	Yes	Yes	Yes	Yes	Yes	LCD x 2	Yes	Yes
Carlisle East	Yes	Yes	Yes	Yes	Yes	LCD	Yes	Yes
Carlisle West	Yes	Yes	Yes	Yes	Yes	LCD	Yes	Yes

\*Banqueting numbers subject to dance floor, staging and backdrop requirements  
 \*See Ground Floor Plan for full overview of all Conference Room capacities and layout options



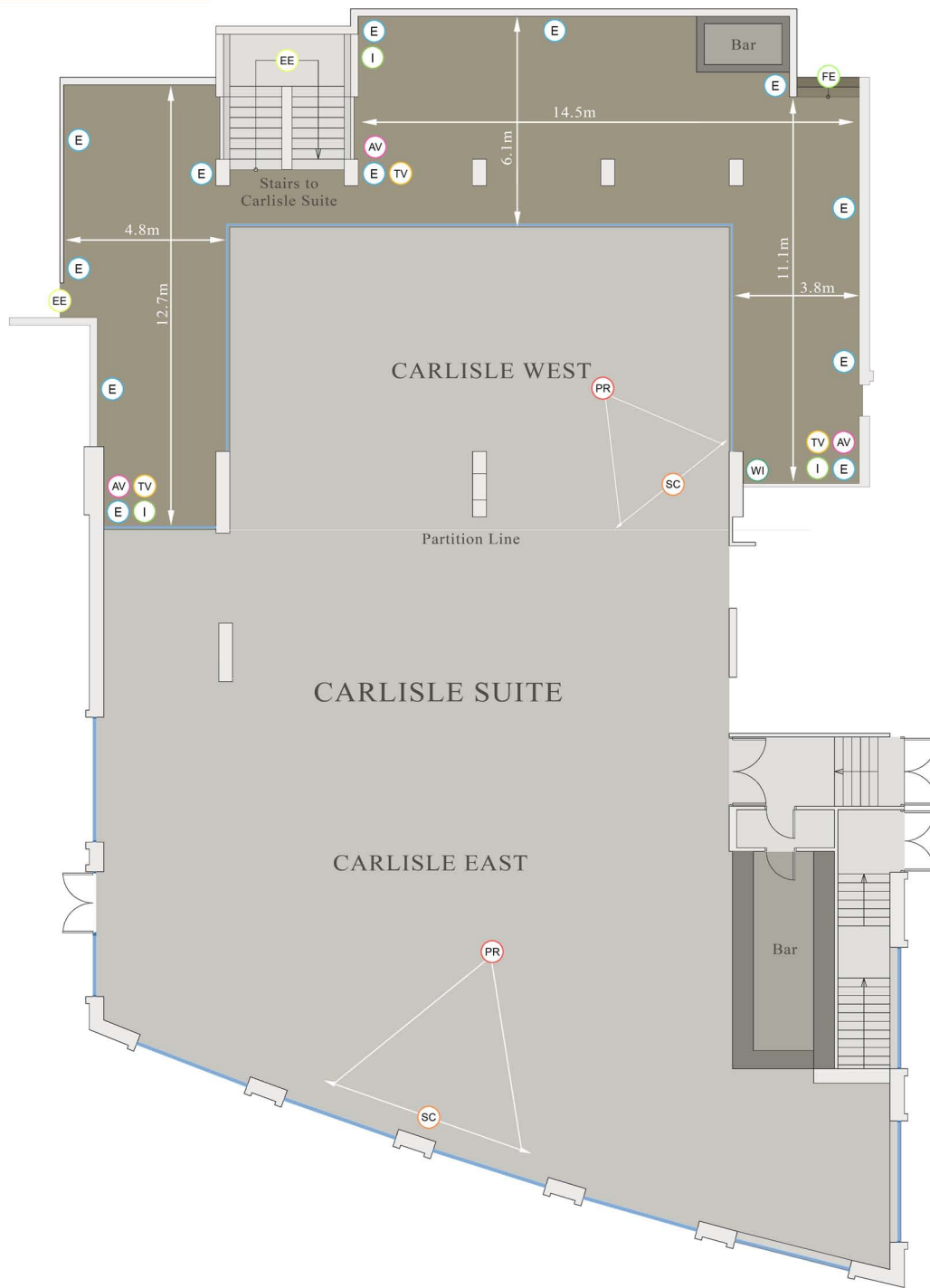
Royal Marine Hotel, Dún Laoghaire, Dublin, Ireland

T 00353 (0)1 230 0030 | F 00353 (0)1 230 0029 | E EVENTS@ROYALMARINE.IE | W WWW.ROYALMARINE.IE

# CONFERENCE FACILITIES AND DEDICATED MEETING ROOMS



## MEZZANINE



### KEY

- Telephone T
- Plasma TV TV
- Internet I
- Wireless Network WI
- Electricity Socket E
- Air-Conditioning Control AC
- Lighting Controls LC
- AV Connection Panel AV
- LCD Projector PR
- Projection Screen SC
- 3 Phase Power 3P
- Emergency Exit EE
- Fire Exit FE

Room Details	Size (m)	Floor Area (Sq.m)	Ceiling Height (m)	Theatre	Classroom	Cabaret	Banquet	Cocktail	U-Shape
Mezzanine	12.7 x 22	175	2.7	100	-	-	80	-	-
Carlisle East	23 x 18	415	4.1	340	150	133	240	350	70
Carlisle West	10 x 14.5	152	4.1	110	80	56	110	250	40

Room Features	Air Conditioning	Dimmers	Daylight / Blackout	Sound	Screen	Plasma / LCD	Hi Speed Internet	Wireless Internet
Mezzanine	Yes	Yes	Yes	Yes	Yes	Plasma x3	Yes	Yes
Carlisle East	Yes	Yes	Yes	Yes	Yes	LCD	Yes	Yes
Carlisle West	Yes	Yes	Yes	Yes	Yes	LCD	Yes	Yes

\*Banqueting numbers subject to dance floor, staging and backdrop requirements  
 \*See Ground Floor Plan for full overview of all Conference Room capacities and layout options



Royal Marine Hotel, Dún Laoghaire, Dublin, Ireland

T 00353 (0)1 230 0030 | F 00353 (0)1 230 0029 | E EVENTS@ROYALMARINE.IE | W WWW.ROYALMARINE.IE



## FIRST FLOOR PLAN



**ROYAL MARINE  
HOTEL**



## CONFERENCE ROOMS

Room Details	Size (m)	Floor Area (Sq.m)	Ceiling Height (m)	Theatre	Classroom	Boardroom	Banquet	Cocktail	U-Shape
Martello Suite	12 x 16.3	190	4.1	150	80	-	100 - 150	220	50
Martello 1	12 x 7.6	91	4.1	80	40	28	70	110	36
Martello 2	12 x 8.7	100	4.1	80	40	28	70	110	36
Dargan Suite	8.5 x 6	51	2.7	48	32	25	-	40	20
Mezzanine	12.7 x 22	175	2.7	100	-	-	80	-	-
Laurels Bar	10 x 16	155	2.7	-	-	-	100	180	-

\*Banqueting numbers subject to dance floor, staging and backdrop requirements

\*See Ground Floor Plan for full overview of all Conference Room capacities and layout options



**ROYAL MARINE  
HOTEL**

Royal Marine Hotel, Dún Laoghaire, Dublin, Ireland

T 00353 (0)1 230 0030 | F 00353 (0)1 230 0029 | E [EVENTS@ROYALMARINE.IE](mailto:EVENTS@ROYALMARINE.IE) | W [WWW.ROYALMARINE.IE](http://WWW.ROYALMARINE.IE)

# CONFERENCE FACILITIES AND DEDICATED MEETING ROOMS



## MARTELLO SUITE



### KEY

- Telephone (T)
- Plasma TV (TV)
- Internet (I)
- Wireless Network (WI)
- Electricity Socket (E)
- Air-Conditioning Control (AC)
- Lighting Controls (LC)
- AV Connection Panel (AV)
- LCD Projector (PR)
- Projection Screen (SC)
- 3 Phase Power (3P)
- Emergency Exit (EE)
- Fire Exit (FE)

Room Details	Size (m)	Floor Area (Sq.m)	Ceiling Height (m)	Theatre	Classroom	Boardroom	Banquet	Cocktail	U-Shape
Martello Suite	12 x 16.3	190	4.1	150	80	-	100 - 150	220	50
Martello 1	12 x 7.6	91	4.1	80	40	28	70	110	36
Martello 2	12 x 8.7	100	4.1	80	40	28	70	110	36
Dargan Suite	8.5 x 6	51	2.7	48	32	25	-	40	20

Room Features	Air Conditioning	Dimmers	Daylight / Blackout	Sound	Screen	Plasma / LCD	Hi Speed Internet	Wireless Internet
Martello Suite	Yes	Yes	Yes	Yes	Yes	LCD x 2	Yes	Yes
Martello 1	Yes	Yes	Yes	Yes	Yes	LCD	Yes	Yes
Martello 2	Yes	Yes	Yes	Yes	Yes	LCD	Yes	Yes
Dargan Suite	Yes	Yes	Yes	Yes	Yes	LCD	Yes	Yes

\*Banqueting numbers subject to dance floor, staging and backdrop requirements  
 \*See Ground Floor Plan for full overview of all Conference Room capacities and layout options

## DARGAN SUITE



Royal Marine Hotel, Dún Laoghaire, Dublin, Ireland

# CONFERENCE FACILITIES AND DEDICATED MEETING ROOMS

## SECOND FLOOR



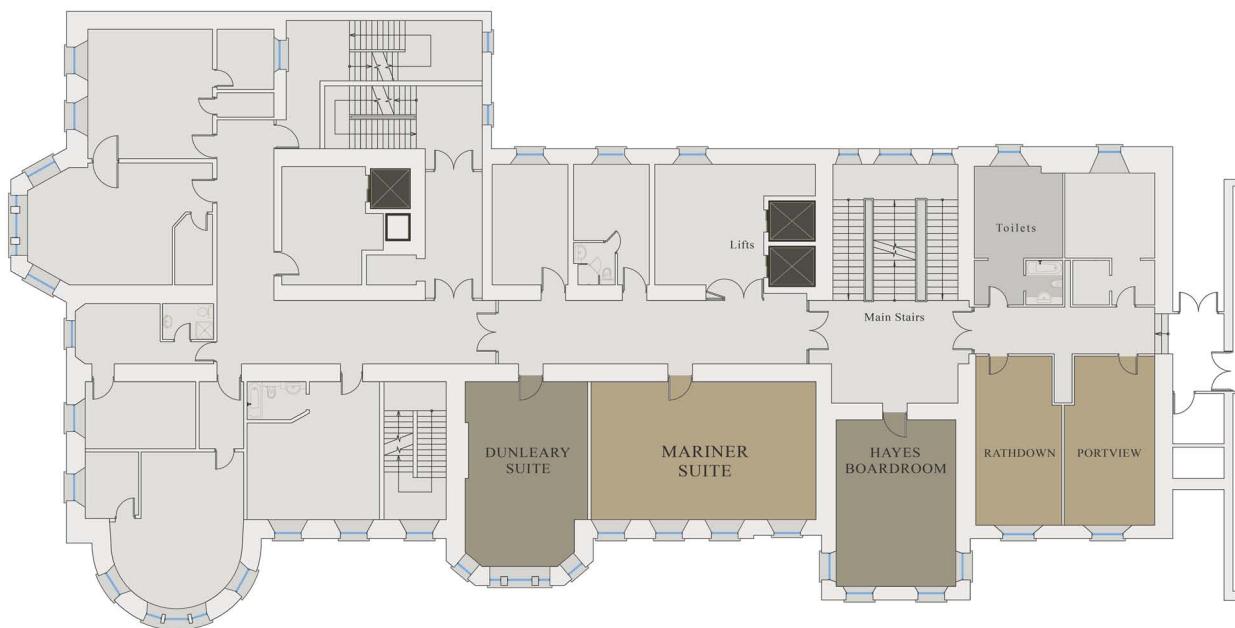
Room Details	Size (m)	Floor Area (Sq.m)	Ceiling Height (m)	Theatre	Classroom	Boardroom	U-Shape	Cocktail
Portview	7 x 3.7	26.3	3.3	16	-	12	12	-
Rathdown	7 x 3.7	26.3	3.3	16	-	12	12	-
Hayes	6.9 x 5.3	36.4	3.8	-	-	14	-	-
Mariner	5.8 x 9.6	56	3.8	50	30	28	26	-
Dunleary	7.4 x 5.2	38.8	3.8	30	28	20	20	-

Room Features	Air Conditioning	Dimmers	Daylight / Blackout	Sound	Screen	Plasma / LCD	Hi Speed Internet	Wireless Internet
Portview	Yes	Yes	Yes	No	No	Plasma	Yes	Yes
Rathdown	Yes	Yes	Yes	No	No	Plasma	Yes	Yes
Hayes	Yes	Yes	Yes	No	No	Plasma	Yes	Yes
Mariner	Yes	Yes	Yes	Yes	Yes	LCD	Yes	Yes
Dunleary	Yes	Yes	Yes	Yes	No	Plasma	Yes	Yes

### KEY

- Telephone (T)
- Plasma TV (TV)
- Internet (I)
- Wireless Network (WI)
- Electricity Socket (E)
- Air-Conditioning Control (AC)
- Lighting Controls (LC)
- AV Connection Panel (AV)
- LCD Projector (PR)
- Projection Screen (SC)
- 3 Phase Power (3P)
- Emergency Exit (EE)
- Fire Exit (FE)

## PLAN VIEW

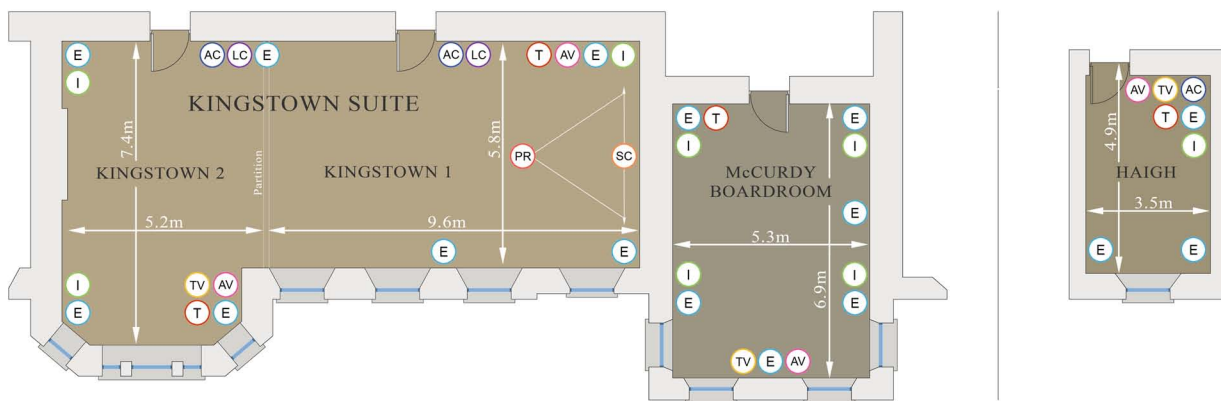




# CONFERENCE FACILITIES AND DEDICATED MEETING ROOMS



## THIRD FLOOR



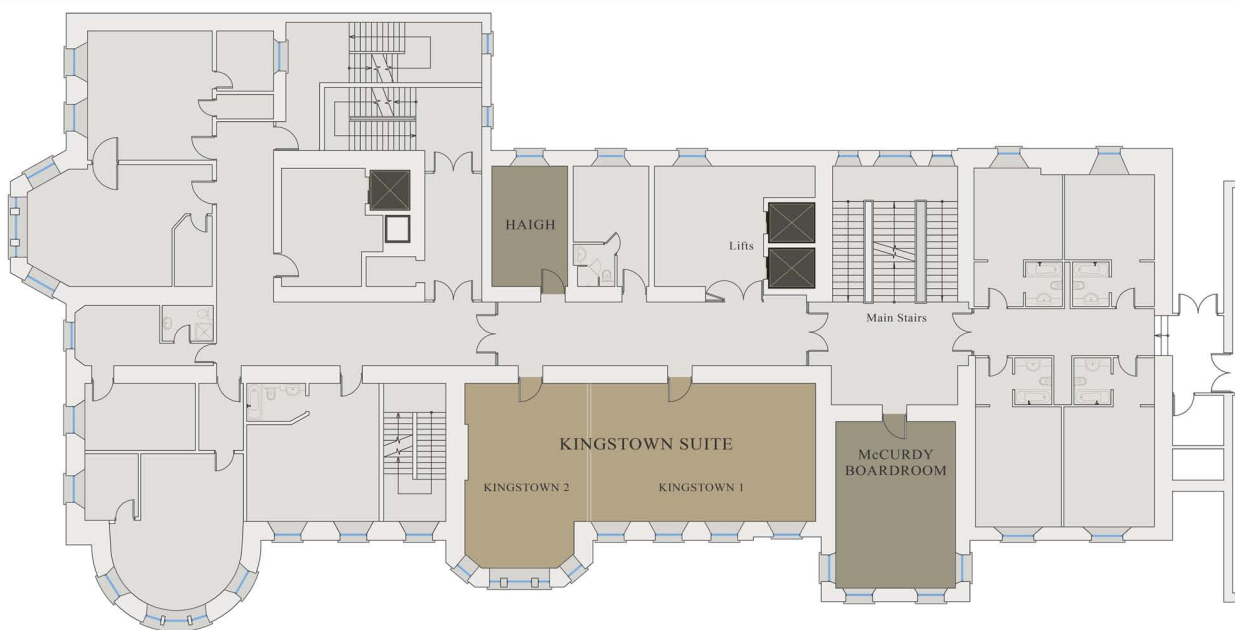
Room Details	Size (m)	Floor Area (Sq.m)	Ceiling Height (m)	Theatre	Classroom	Boardroom	U-Shape	Cocktail
Kingstown	14.8 x 6	90	3.1	100	50	36	36	100
Kingstown 1	9.6 x 5.8	58.5	3.1	60	30	28	26	70
Kingstown 2	5.2 x 7.4	39.9	3.1	30	28	20	20	30
McCurdy	5.3 x 6.9	37	3.8	-	-	14	-	-
Haigh	3.5 x 4.9	18	3.8	16	-	12	-	-

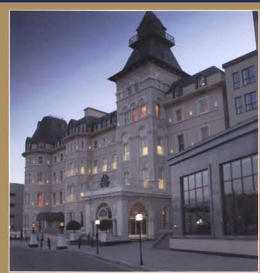
Room Features	Air Conditioning	Dimmers	Daylight / Blackout	Sound	Screen	Plasma / LCD	Hi Speed Internet	Wireless Internet
Kingstown	Yes	Yes	Yes	Yes	Yes	Both	Yes	Yes
Kingstown 1	Yes	Yes	Yes	Yes	Yes	LCD	Yes	Yes
Kingstown 2	Yes	Yes	Yes	Yes	No	Plasma	Yes	Yes
McCurdy	Yes	Yes	Yes	No	No	Plasma	Yes	Yes
Haigh	Yes	Yes	Yes	No	No	Plasma	Yes	Yes

### KEY

- Telephone (T)
- Plasma TV (TV)
- Internet (I)
- Wireless Network (W)
- Electricity Socket (E)
- Air-Conditioning Control (AC)
- Lighting Controls (LC)
- AV Connection Panel (AV)
- LCD Projector (PR)
- Projection Screen (SC)
- 3 Phase Power (3P)
- Emergency Exit (EE)
- Fire Exit (FE)

## PLAN VIEW





**The Pier**  
Health Club



**ROYAL MARINE**  
HOTEL

sansanaSPA

**Carlisle Conference Centre**

**Twelve Dedicated Meeting Rooms**  
designed with ergonomically equipped furnishings

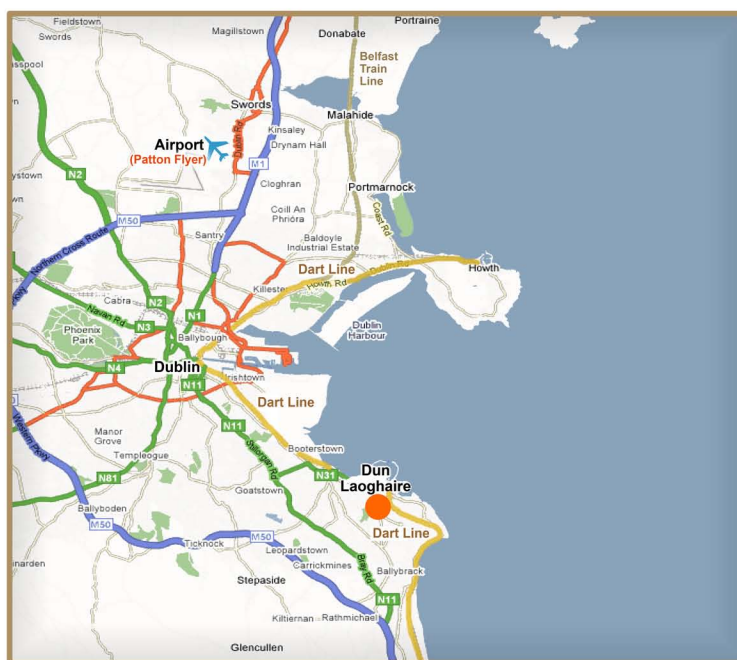
**Two Executive Boardrooms**

**Business & Communications Centre**

**Dedicated Conference & Events Team**

**Complimentary**  
**Wifi - AV Equipment - Car Parking**

**Contact Our Conference & Events Team Directly**  
**ph.** (01) 2712515 or (01) 2712516 **email.** [sales@royalmarine.ie](mailto:sales@royalmarine.ie)



**Distance from Key Points**

**Dun Laoghaire DART Station - 200 mtrs - 2 Minutes - [www.irishrail.ie](http://www.irishrail.ie)**

**Dublin City Centre - 11 kms - 20 Minutes - [www.dublintourism.ie](http://www.dublintourism.ie)**

**Dublin Airport - 22 kms - 50 Minutes - [www.thepattonflyer.ie](http://www.thepattonflyer.ie)\***

*\*The Patton Flyer Coach Service is available from Dublin Airport to the front door of The Royal Marine Hotel.  
For Rates & Schedules please visit [www.thepattonflyer.ie](http://www.thepattonflyer.ie)*



**ROYAL MARINE**  
HOTEL